



Building with conscience.

Sheltering Arms Institute

Richmond-Area Hospital's Building Facade Secured with StoVentro™ Sub-Construction

Facades



Securing two types of exterior cladding to a healthcare facility required the flexibility and versatility that only StoVentro™ Sub-Construction could provide.

Sto Products	StoVentro™ Sub-Construction
Applicator	Pillar Construction
Architect	HDR
Channel Services Partner	CFS - Cladding Facade Solutions
Media Contact	Schoeny Jones: sjones@stocorp.com Julie Chalpan: julie@focusunlimitedpr.com



The Shelting Arms Institute is an inpatient rehabilitation hospital developed by Shelting Arms Hospital and VCU Health in Richmond, Virginia.

Situated on 25 acres, the 200,000-square-foot facility has 114 beds for people who are recovering from brain injuries, spinal cord injuries and strokes. It also provides services to patients with neurological conditions.

At a cost of \$95 million, the hospital also includes an expansive 9,000-square-foot main therapy gym where patients undergo physical and occupational therapy as part of their individual recovery plans.

When architects and contractors were making decisions on the façade of the new hospital, they settled on StoVentro™ Sub-Construction to attach and secure the external cladding.

Sheltered in Place

For the exterior of the building, architects decided to create a mix of terracotta and metal panels for a sophisticated, modern look.

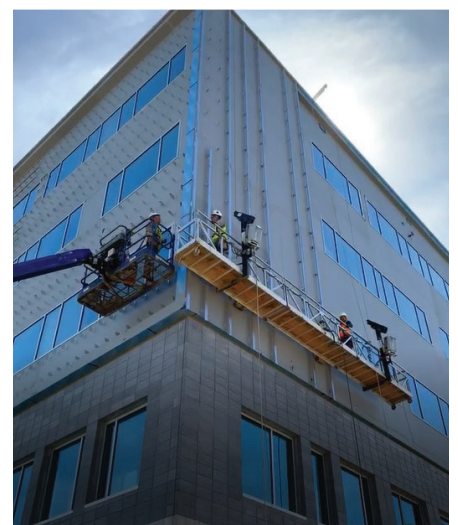
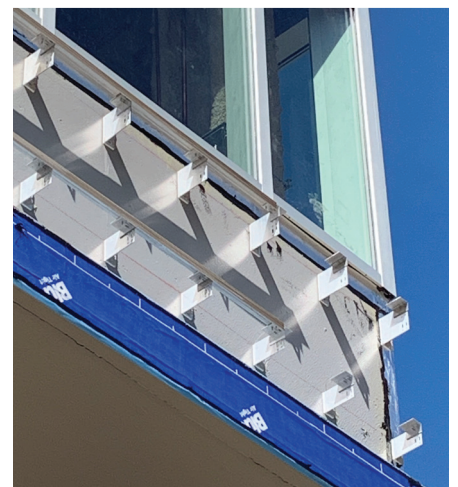
Gabriel Castillo, business development manager for Pillar Construction, said StoVentro Sub-Construction was the optimal solution to support both forms of external cladding.

Offered in stainless steel, aluminum, and Passive House configurations, the bracket and rail support system is embedded in the insulation, serving as the anchor for 49,000 square feet of the building's exterior wall.

Castillo noted that the brackets have built-in ways to adjust for the inconsistencies of the substrate, and the aluminum horizontal rails serve as an easy way to hang the vertical components.

"The fact that you can adjust the plane of the sub framing helps us as an installer to execute the project faster," Castillo said. "We can accommodate site conditions better than having a bracket that is not adjustable."

For instance, the use of StoVentro Sub-Construction meant that installers did not have to move a window or adjust concrete that might have been off plane.



"The fact that you can adjust the plane of the sub framing helps us as an installer to execute the project faster."

Gabriel Castillo | Pillar Construction



One Complete System

StoVentro Sub-Construction is specifically engineered to compensate for uneven substrates and provide for flush transitions between different rainscreen claddings. It is one component of the StoVentec® ventilated Rainscreen® cladding system, which provides superior weathertightness, thermal performance and fire protection, all in a single, fully warranted solution.

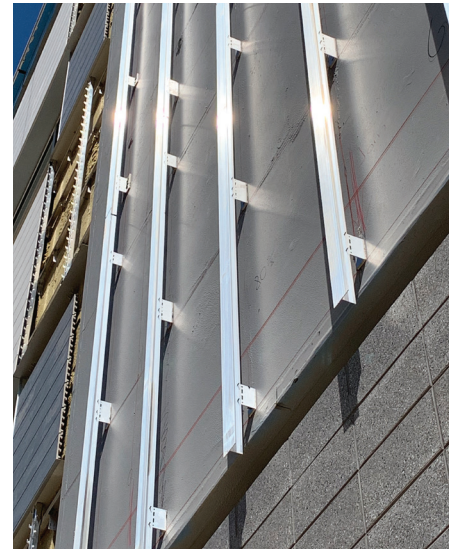
Whether used as part of the complete StoVentec® Rainscreen® system or as a standalone with other claddings, StoVentro Sub-construction is unique in its versatility. For example, the two claddings used on Sheltering Arms required different orientations of the support rails. The terracotta cladding required horizontal rail orientation, while the metal panels were on a vertical plane. StoVentro was able to accommodate both seamlessly.

Singular Solution, Inherent Value

With the Sheltering Arms project, utilizing the StoVentro Sub-Construction simplified the installation of the two claddings, which came from two different manufacturers. Having one sub-construction system that worked with both claddings streamlined the order, delivery and installation process, saving time and effort, which represented value to Gabriel Castillo and his team.

“The StoVentec program works with installers to optimize and figure out better ways to utilize the maximum potential of the product,” Castillo said. “They worked very closely with us.”

Sheltering Arms held its grand opening of the new medical facility in the spring of 2020.





Inspiration favors the open mind

With Sto, your creative exploration can take you anywhere. Our proven products give you unmatched freedom and the ability to achieve your vision in any color, any form, any texture, any material.

StoVentec Rainscreen systems provide a wide range of aesthetic options and price points from glass, to stone, wood, mosaic and any combination in between. They bring form together with function in a complete, single source system, allowing you to create wall systems that are visually stunning, durable and thermally efficient. Imaginative design using StoVentec Glass, with the smooth, hard, reflective look of glass, can be accentuated with an adjacent StoVentec Render system. Featuring a wide range of color and texture options, StoVentec Render extends design possibilities, and helps you create a look that is uniquely appealing.

Creativity Begins. **Sto Finishes.**®



Sto Americas

Sto Corp.
3800 Camp Creek Pkwy
Building 1400, Suite 120
Atlanta, GA 30331
USA

Phone 1-800-221-2397
www.stocorp.com